



# Our Profile

# Contents

1

About Us

2

Our Vision, Mission,  
Brand Promise & Values

3

Talent Sourcing &  
Management

5

Online Psychodiagnostics

8

Business Advisory &  
Consulting

9

Digital Services

11

Training

12

Our Journey



# Reimagine Your Business

---

Myrtle Management Consultants RC1083018 is a management consultancy firm, set up with the objective to be the preferred and reliable partner in core business management processes. As part of our key focus, we aim to support our clients to achieve a synergy between people, system, and processes. Incorporated in 2012, Myrtle is a fast-growing firm, with a dynamic, insightful, and professional leadership team.

At Myrtle, we view each consulting contract as a mutually beneficial long-term agreement and not a short-term business transaction. We aim to form a partnership and adopt a commitment to see the organisation succeed, this we believe will help to enhance our long-term profitability, increase the number of referrals and ensure that our clients trust our advisory services and will reinforce our business relationships.

Our task as your business consultants includes the search for optimal ways out of situations which require outsourcing support. We continuously develop and monitor effective strategies and practices to ensure process excellence. Most importantly we save you time and money!

We have a very competent team that have not only the passion for carrying out our support tasks but also the educational, technical, and professional qualification to work with your organisation. We guarantee a timely response to your requests. Services may include not only consulting support but also the implementation of administrative decisions.



## OUR VISION

To be the preferred pan African consulting firm, consistently offering insight, innovation, and apt advisory services.



## OUR MISSION

Adopting a multidisciplinary approach to consulting, we aim to be diverse and flexible in our scope of services and detailed on the insights we offer.



## OUR PROMISE

At all times we will focus on delivering quality, having a visionary leadership and the best in class brains and minds.



## OUR VALUES

### Innovation

Fresh is the word we work with every day. We bring in creativity, flexibility and strongly seek to understand our clients' needs to deliver apt and custom fit services.

### Professional

We always provide an unbiased third-party perspective on a wide range of business functions and identifying alternatives, options and implications. We will not compromise on our integrity.

### Passionate

We love what we do, and our aim is to infuse clients with a passion for their business as well as the strategy to be aspiring in what they do.

### Community Centric

We understand that we do not operate in a vacuum. So, we always aim to provide insight that will benefit our clients. We also give back to the community by participating and partnering in select Community development activities.

### Continuous Learning

Learning never stops at Myrtle and teaching we believe is a continuous circle. We always seek to achieve results which are realistic, measurable and allow for continuous improvement. We attract people with diverse interest and background to resonate the strength of diversity in our workplace, thus enabling our firm to always provide a fresh but experienced perspective on issues.

### Teamwork

We work as partners within ourselves and with our clients. We understand very well that "a cord of three strands is not easily broken". Working together we can use diversity to achieve the best results.





# Talent Sourcing & Management

*Our professional recruitment consultancy is focused on placing high caliber professionals into permanent, contract and temporary positions at all levels of seniority.*

Our HR Consulting services include handling all complete aspects of the candidate's profile from sourcing, selection, shortlisting, interviews, assessments and onboarding.

Under our Expat recruitment consultancy and outsourcing services, we worked on behalf of a wide range of clients that operate across the world,

either on an international basis or with companies that recruit and focus locally.

Myrtle has provided recruitment services across the Oil & Gas (downstream and mid-stream), engineering, construction, technical manufacturing, hospitality, banking and finance, educational, media and healthcare industries.

## A Proven Solution

Myrtle MC's Project-Based Recruitment Solutions offer an outsourced approach to optimize your talent acquisition, to manage multiple hires within a specific timeframe. Our consultants use our proven methodology and are guided by the ISO 30405:2016 Human Resource Management – Guidelines on recruitment to deliver seamless, workflow-driven talent acquisition strategies that can help you secure the right talent, quickly and effectively.

Before engagement, our consultants will work with you to fully understand your requirements, understand the business culture, and develop a customized strategy for identifying, attracting, and retaining talent.

Once the project is under way, our team follows a tightly integrated process and timeline to deliver multiple hires without sacrificing quality or efficiency. Our proven processes for candidate care, screening and evaluation ensure that you reach the right people to meet the needs of your business.

- Manpower Recruitment Services (Temporary & Permanent roles)
- Recruitment Process Outsourcing (Permanent Roles)
- Executive Search (Head-Hunting)
- Performance Management (Design & Implementation)
- Competency framework & Mapping
- Skills Audit
- Organizing Staff Retreats Sessions
- Human Resource Documentations Templates
- Job Listing and Vacancy Advertisement
- HR Process Outsourcing – Payroll Outsourcing
- HR Business Partner Implant



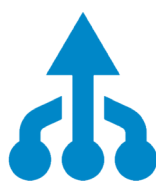
## Talent Management Solutions

We have worked with our solution partner to bring to you online talent management solutions which have been helping organisations to optimise their overall performance by making better, objective people decisions. Our psychometric assessments deliver valuable insights into the personality and behaviours, abilities, and motivations of their people.

## WHEN TO USE OUR SOLUTIONS?



Recruitment



Team  
Development



Internal Mobility &  
Succession Planning





# Online Psychodiagnostics

Effective basis for candidate selection and development. Discover candidate's personality and characteristics

- Develop employees
- Save your time and money during selection
- Select the right ones





## We currently offer more than 15 methods which are focused on:

- Personality type
- Motivation
- Stress management
- Intelligence
- Attention
- Ethics at work
- Leadership

## 360°Feedback:

- Develop employees and maximize potential
- Fast and flexible tool
- Personalized questions and scales
- Development tool or as a tool for annual performance reviews
- Different kinds of reports



## Employee Survey:

*Find out where the shoe pinches.  
Identify problem areas in a company.*

- Flexible tool
- Employee satisfaction, survey of company, exit interview
- Commitment, identification
- **SMART** reports-automatically identifies the highest-risk groups throughout company (for FREE)
- Online reports (detailed information about there turn rate, measuring the importance of questions)reviews
- Different kinds of reports

## Perfeed:

*Immediate fast feedback  
Real time online app for the fast and immediate employee feedback.*

- It's very easy to use it by phone, tablet, or laptop
- Give a feedback or ask for it anytime





# Business Advisory & Consulting

Building a strategic development and expansion plan is vital and gets your business positioned for greater!

The emergence of new technologies, new economies, the subject matter of sustainability and new strategic imperatives makes the business world a very dynamic environment. As a business you must continually reinvent, upscale, retool to stay abreast, ahead, and above! This is where we come in!

Since inception, Myrtle has been offering professional services to mainly private sector business,

although key members of our team have also consulted for the Public Sector in an individual capacity. Organizations are continually operating in a space influenced by Political, Economic, Social, Technological, Legal and Environmental Influences.

Our job is to support your business with the advisory fit for purpose-engineered to help you either take flight or fly higher. We believe that sustainability and success must go in tandem with planning, reviews, SMART and strategic implementation, and an in-depth 360 degrees Analysis.

- Organizational Diagnostics
- Feasibility and other Pre-Investment Studies
- Development Planning Business Growth and Expansion Guidance
- Business Process Design and Implementation
- Strategic Goals and Objectives Development and Implementation and Advisory
- ISO Integrated Management Systems (Documentation to Implementation Consultancy)



# DIGITAL SERVICES

*The world of business is rapidly undergoing a digital revolution.  
JOIN THE REVOLUTION!*

## Enterprise Resource Solutions

Our Enterprise Resource solution will afford your business the benefits of having all your key resource tools in one place: No need to share database etc. But you will have a web-based cloud tool which helps to automate the entire business operations including Sales Management, Purchase Management, Inventory Management, Customer Relationship Management and Accounting Management. You can also make online approvals and get email notifications for due task or responsibilities.

Working with our technology partners, we can gather requirements and understand your specific needs

to deploy an ERP solution for mobile application and remote access. Your business can save the number of man-hours used and have a more engaged employee by automating your business processes with our expertly designed and user-friendly and budget friendly platforms.

Our ERP Solutions are customizable and contain key modules to help your business model and align with industry best practice.



# Datalytics

---

As a business leader, we understand that to keep up with the fast pace of technology changes one of your major concerns will be how to implement change, merge new technology with your existing systems in a safe and controlled way.

To participate actively in the ongoing digital revolution data is fundamental and a key enabler. The intelligence to provide unique/tailored experiences to your clients can be unleashed ensuring data-driven decisions. Our goals are to provide end-to-end management to this complexly distributed information ecosystem. We understand your need to deploy



data, IT capacity and infrastructure in an effective and efficient manner.

## If you are wondering:

- What data do we produce?
- What data do we need to have a 360 view of our business?
- How are the disparate data sets related?
- Where is the data stored, how is it generated and what is the flow?
- What insights are hidden in the volume of data we have?
- How can we predict the next big step?
- What is missing and how can we plug it?
- Who has access to what?
- What regulations do we need to comply with?

## We can help you to achieve the following with your data;

- Develop data strategy and policy alignment.
- Implement a robust data governance framework to ensure you collect
- Analyze, define, structure, and document your data consistently across the enterprise.
- Analyze data operation activities for automation and operational efficiency.
- Actively monitor and manage quality of your data.
- Develop and implement robust data architecture.
- Deliver economies of scale for your management systems.
- Use data analytics to spot trends and forecast failures.
- Drive better business decisions and market performance exploring potentials for predictive capabilities.

# Training

---

A key objective of any organization is to develop an environment of learning and coaching so that the teams develop their own skills. Our training modules are dedicated to developing people, supporting improvement, and creating “Change Leaders”.

From our deep on-site consulting roots, we have evolved and designed a comprehensive set of training programs to complement our consulting delivery. We support our clients to Learn (via training), Implement and sustain change activities so that they can become faster, better, and more cost-efficient.

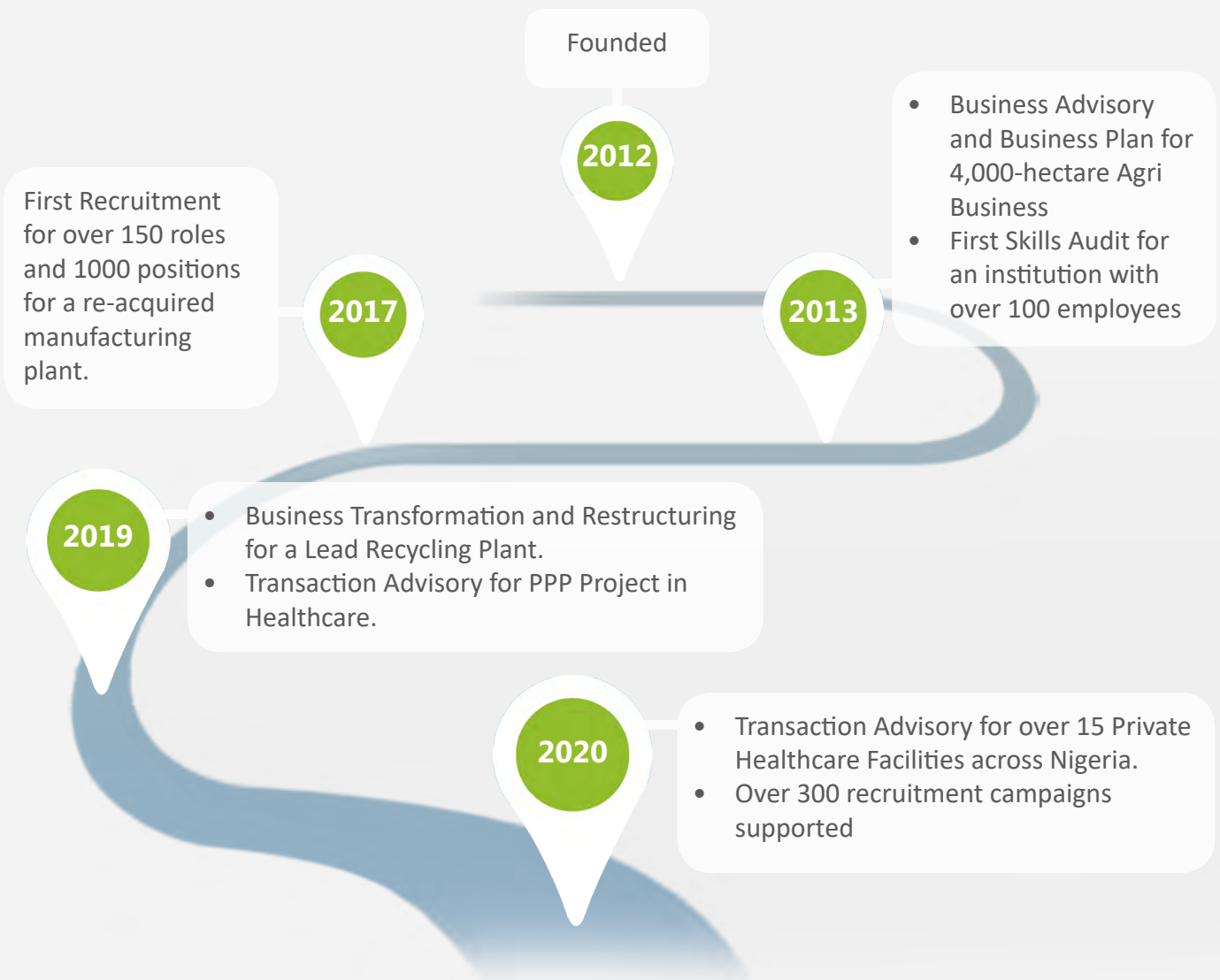
More importantly, we support organizations to develop a learning culture which delivers sustainable higher performance to the organisation. Our training is designed to help the participants go beyond concepts while getting exposed to practicality of implementation. Helps achieve operational excellence and rooted in practical concepts, which participants can apply immediately at work for better





# Our Journey

Gain Success with Us!  
Get to know us better!



## 200+

Happy Clients

## 25+

Projects Finished

## 10+

Business Solutions

# Myrtle

Management Consultants  
*A Preferred Business Partner...*

 [www.myrtlemcltd.com](http://www.myrtlemcltd.com)  07037742119, 08170000332  [clientservices@myrtlemcltd.com](mailto:clientservices@myrtlemcltd.com)

 @myrtlemc |  @myrtlemc\_ |  skype:myrtlemc |  Myrtle Management Consultants



#### Lagos Office

The Waterside, 5 Admiralty Road, off Admiralty Way, Lekki Phase I, Lagos, Nigeria.

#### Port Harcourt Office

55b Circular Road, Elekahia Housing Estate, Port Harcourt, Rivers State, Nigeria.

#### Abuja Office

29 Mambilla St. Three Arms Zone, Federal Capital Territory, Abuja, Nigeria.